

INTRO BRASS CHORALE, SLOW TEMPO

Musical notation for the Intro Brass Choral section, measures 1-8. The piece is in 4/4 time and B-flat major. Measures 1-3 contain three quarter notes (B-flat, D, F). Measure 4 is a whole note (B-flat). Measure 5 is a whole rest. Measure 6 is a whole note (B-flat). Measure 7 is a whole note (D). Measure 8 is a whole note (F). A fermata is placed over measure 8, and a double bar line with repeat slashes follows.

9 **A** NEW TEMPO, FAST

Musical notation for section A, measures 9-12. Measure 9 is a whole note (B-flat). Measure 10 is a whole note (D). Measure 11 is a quarter note (F) followed by a quarter note (B-flat). Measure 12 is a quarter note (D) followed by a quarter note (F) with a fermata.

13

Musical notation for section A, measures 13-16. Measure 13 is a whole note (B-flat). Measure 14 is a quarter note (F) followed by a quarter note (B-flat). Measure 15 is a quarter note (D) followed by a quarter note (F) with a fermata. Measure 16 is a quarter note (D) followed by a quarter note (F) with a fermata.

17

Musical notation for section A, measures 17-20. Measure 17: B-flat, D, F, B-flat. Measure 18: B-flat, D, F, B-flat. Measure 19: B-flat, D, F, B-flat. Measure 20: B-flat, D, F, B-flat with a sharp sign over the B-flat.

21

Musical notation for section A, measures 21-24. Measure 21: B-flat, D, F, B-flat. Measure 22: B-flat, D, B-flat, B-flat. Measure 23: B-flat, D, F, B-flat. Measure 24: B-flat, D, F, B-flat.

25 **B**

Musical notation for section B, measures 25-28. Measure 25: B-flat, D, F, B-flat. Measure 26: B-flat, D, F, B-flat. Measure 27: B-flat, D, F, B-flat. Measure 28: B-flat, D, F, B-flat.

29

Musical notation for section B, measures 29-32. Measure 29: B-flat, D, F, B-flat. Measure 30: B-flat, D, F, B-flat. Measure 31: B-flat, D, F, B-flat. Measure 32: B-flat, D, F, B-flat.

33

Musical notation for section B, measures 33-36. Measure 33: B-flat, D, F, B-flat with a sharp sign over the B-flat. Measure 34: B-flat, D, F, B-flat. Measure 35: B-flat, D, F, B-flat. Measure 36: B-flat, D, F, B-flat.

37



41

C

OPEN SOLOS



45



49

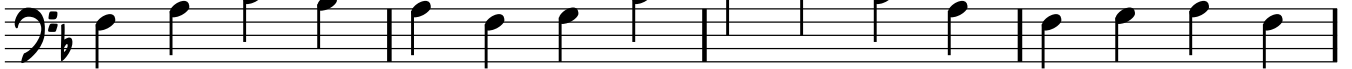


53



57

D



61



65

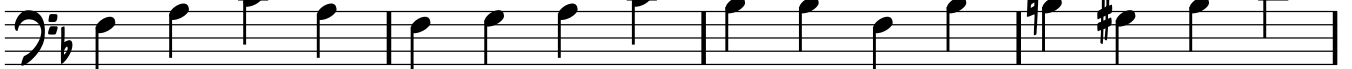


69



73

E



77



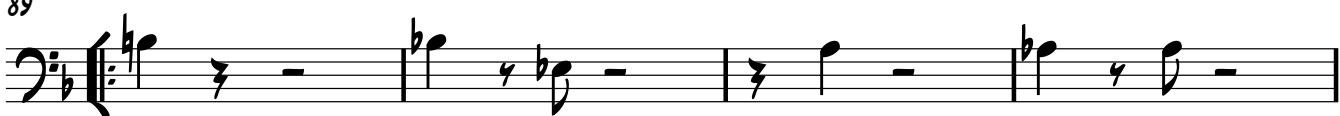
81 **F**



85



89



93



97 **G**



102

